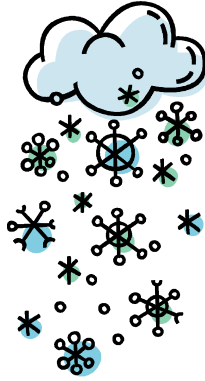


## Severe Weather Procedures for Car Riders and Walkers

When the temperature is below 20 degrees including the wind chill, car riders and walkers will be dismissed from the gym instead of having to wait outside. Please follow these procedures. Carpooling when you can will make the process run more efficiently.

### Walkers

Students will wait in the gym.  
Parents may enter the building and walk toward the gym. Mr. Horrell will send students out of the gym when he sees their parents.



### Car Riders

Students will wait in the gym.  
Parents will remain in their cars and pull up 2-3 cars past the back gym door. Mr. Scott will send your child out to you.