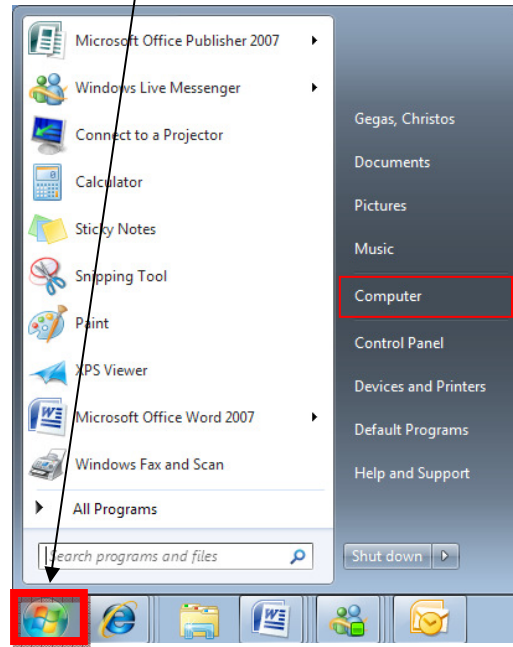


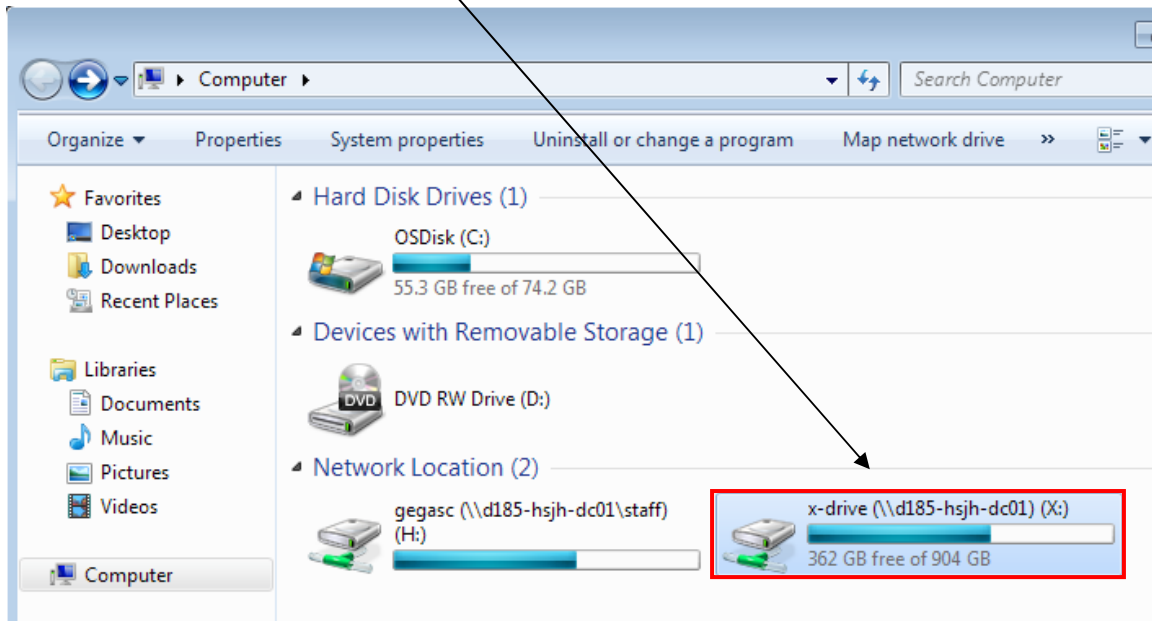
## To Add a Printer in Windows 7

1) Left mouse click on **Start**.

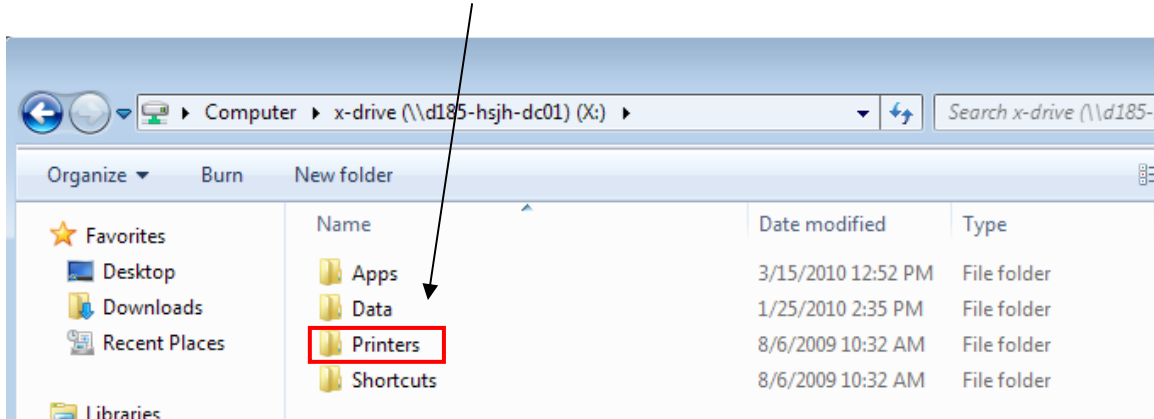


Left mouse click on **Computer**.

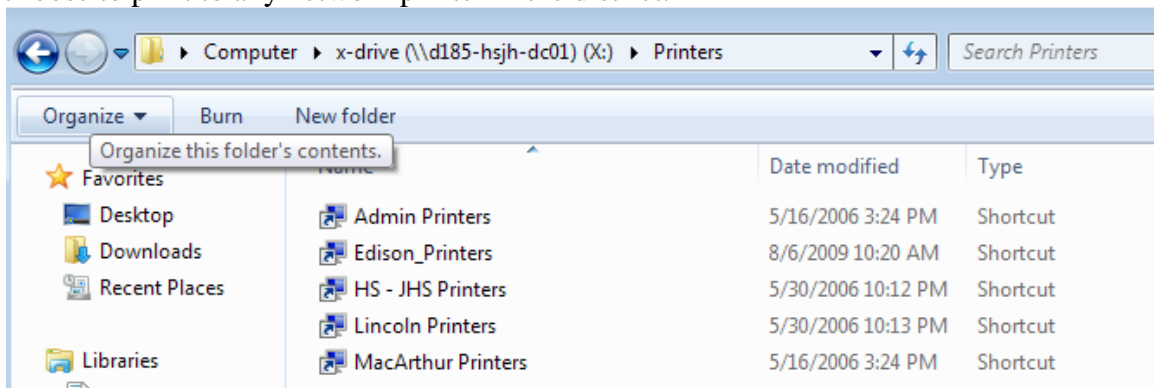
2) Double left mouse click the **X: drive**.



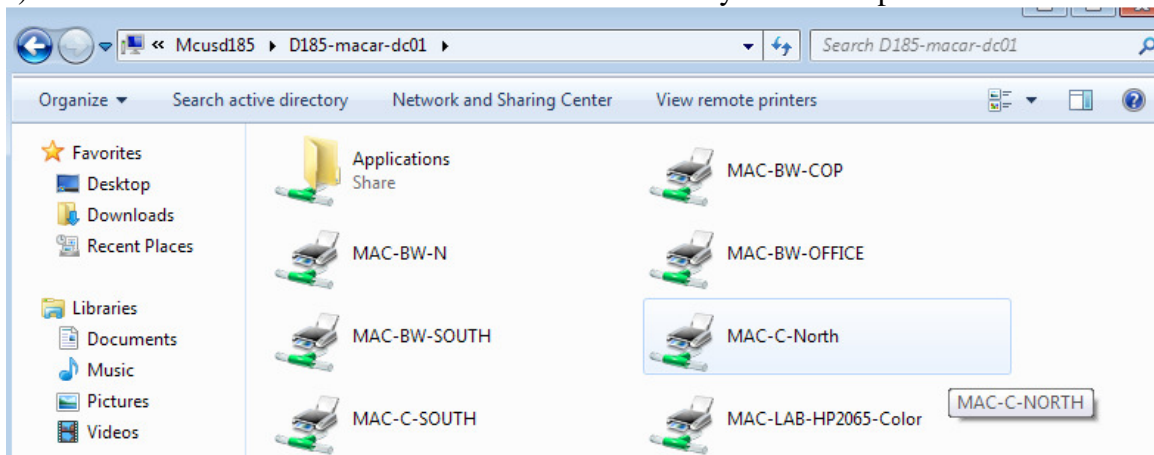
3) Double left mouse click on the **Printers** folder.



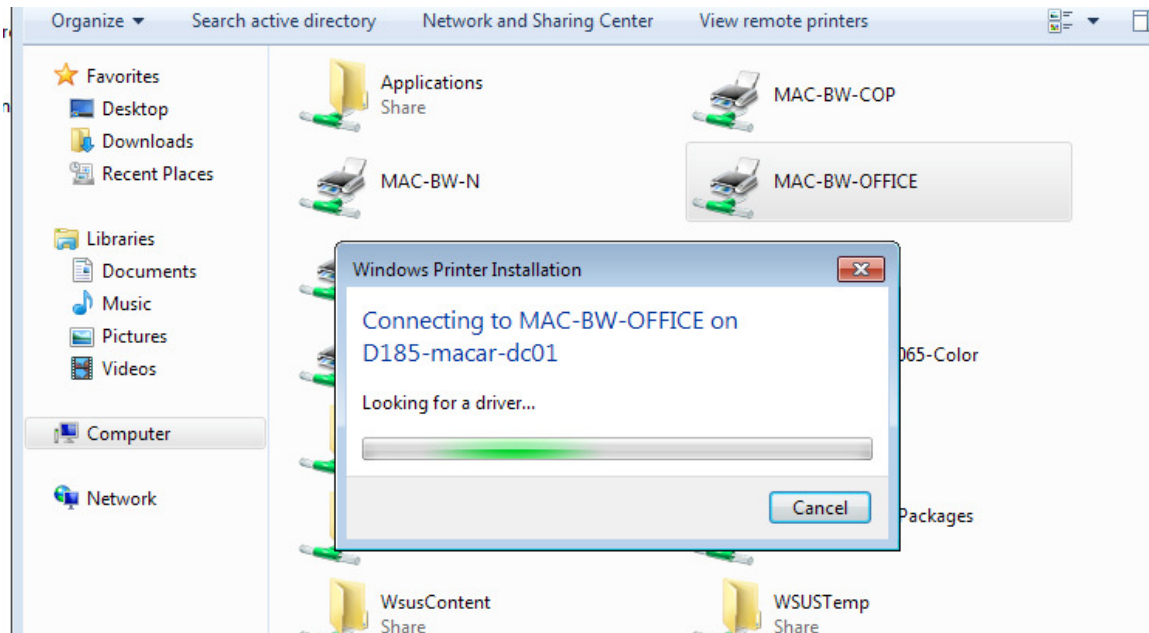
4) Double left mouse click on the **Building** where the printer is located. Yes, you can choose to print to any network printer in the district.



5) Double left mouse click on the **Name of the Printer** you want to print to.



6) After a few seconds of waiting, a box similar to this one will appear. Left mouse click on the **Close (X)** button to complete installation



Then click “Install Driver”

